



EMPLOYEE & FAMILY  
HOUSING

*Comfortable, Spacious,  
Community Living*



# CLOSE TO EVERYTHING...

San Francisco State's residential communities are located in the quiet, southwestern corner of one of the most exciting, culturally rich, and picturesque cities in America. Imagine living only a short distance from all that San Francisco has to offer.



## WALK TO WORK OR CLASS

Living on campus not only eliminates your commute, but it also brings you closer to campus resources such as the bookstore, library, campus dining locations, and more.



## SHOPPING & RESTAURANTS NEARBY

Convenience doesn't stop with the close proximity to campus. With a variety of shops and restaurants at Stonestown Galleria and West Portal, you'll find everything you need right outside your door.



## CLOSE TO PARKS & RECREATION

With Lake Merced, SF State's Mashouf Wellness Center, and the Pacific Ocean only a short distance away, you can easily go for a walk, enjoy a workout, or simply enjoy the view.



## EASY ACCESS TO FREEWAYS & PUBLIC TRANSPORTATION

Whether you are running errands or exploring the Bay Area, nearby public transportation options and freeways makes getting there a breeze.



# UNIVERSITY PARK NORTH

THIS IS NOT A RENT CONTROLLED COMMUNITY



## HIGH-RISE APARTMENTS

University Park North high-rise apartments have everything you need to fit your lifestyle - a welcoming environment, spacious living areas, and close proximity to campus and local businesses.



**AMENITIES**

**Pets Welcome**  
Restrictions apply  
Additional cost

**Limited Access Community**

**Additional Storage**  
Additional cost

**On-site Laundry Facilities**

**Covered Parking**  
Additional cost

**Bike Storage**

**Online Payments Available**

## A Perfect Place to Call Home.

Whether you're working, studying, relaxing, or exploring the neighborhood, the comfort and conveniences of University Park North will make you proud to call it your home.

The full kitchen, living and dining area, along with ample storage will allow you to make the most of your space and apply your finishing touches. Plus, with utilities and maintenance services included, you'll be able to live hassle-free so that you can focus on the more important things in life.

**COMMUNITY LIFE**

University Park North is a diverse multi-cultural community where smiling faces in the hallway or friendly interactions with neighbors are a common occurrence.



## LOCATION FEATURES

University Park North is situated on 24 beautiful acres adjacent to the Stonestown Galleria Shopping Center.

This neighborhood is an ideal location to help you make the most of each day. Campus is easily accessible using a short walking path and there are plenty of shops, restaurants, and public transportation options only a few steps away.

## APARTMENT FEATURES

Water, electricity & garbage included

Full stove/oven, dishwasher\*, and refrigerator  
\*In select apartments

Carpet and vinyl in most units

High-speed Internet & cable ready

Linen and coat closets

Picturesque views on top floors

1, 2, or 3-bedroom floor plans with 1 or 2 baths are available. Some upgraded units are also available at an additional cost. Visit [efh.sfsu.edu](http://efh.sfsu.edu) for full rate detail and eligibility requirements.

Not all floor plans are as shown.



Starting at **\$2,485**

729 SQ. FT. : 1 : 1



Starting at **\$3,090**

821-970 SQ. FT. : 2 : 1



Starting at **\$4,085**

1162 SQ. FT. : 3 : 2



# UNIVERSITY PARK SOUTH

THIS IS NOT A RENT CONTROLLED COMMUNITY



## TOWNHOME-STYLE APARTMENTS

With spacious townhome-style apartments, private entries, and convenient location, you'll quickly settle into a comfortable lifestyle at University Park South.



**AMENITIES**

**Pets Welcome**  
Restrictions apply  
Additional cost

**On-site Laundry Facilities**

**Covered Parking**  
Additional cost

**Private Entries**

**Additional Storage**  
Additional cost

**Bike Storage**

**Online Payments Available**

Comfort,  
convenience,  
and privacy...  
all in one place.

Residents at University Park South experience the best of both worlds - living in one of the most exciting cities in America without the hassle of a busy downtown.

Each apartment features a full kitchen, dining area, living room, and a semi-private patio\* where you can relax, study, or enjoy the view of the open-air garden courtyard.

\*2 & 3 bedroom apartments only

**COMMUNITY LIFE**

At University Park South residents can enjoy an independent lifestyle with the perks of living in a close-knit community.

## APARTMENT FEATURES



Water & garbage included



Hardwood floors and vinyl throughout



Ceiling fan in main living space\*

\*In select apartments



Linen and coat closets



Full stove/oven, dishwasher\* and refrigerator

\*In select apartments



High-speed Internet & cable ready



Semi-private patio

2 & 3 bedroom apartments only



## LOCATION FEATURES

University Park South is located across the street from the main campus in one of San Francisco's most unique neighborhoods - Parkmerced.

Parkmerced is a vibrant neighborhood surrounded by nature, recreation, shopping, restaurants, and more.

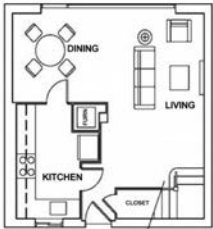
1, 2, or 3-bedroom floor plans with 1 or 2-2.5 baths are available. Some upgraded units are also available at an additional cost. Visit [efh.sfsu.edu](http://efh.sfsu.edu) for full rate detail and eligibility requirements.

Not all floor plans are as shown.



Starting at **\$2,520**

668-739 SQ. FT. : 1 : 1



SECOND FLOOR

Starting at **\$3,360**

931-1068 SQ. FT. : 2 : 1



SECOND FLOOR

Starting at **\$4,110**

1062-1710 SQ. FT. : 3 : 2.5



SAN FRANCISCO  
STATE UNIVERSITY

## EMPLOYEE & FAMILY HOUSING

### CONNECT WITH US



(415) 405-4000



[employee\\_housing@sfsu.edu](mailto:employee_housing@sfsu.edu)



[efh.sfsu.edu](http://efh.sfsu.edu)



796 State Dr. San Francisco, CA 94132